



Use of Metapace L-42DT printer



United Nations
Educational, Scientific and
Cultural Organization

Regional Centre for
Library Information Systems and
Current Research Information Systems
Regionalni center za knjižnične
informatijske sisteme in informatijske
sisteme o raziskovalni dejavnosti



© IZUM, 2024

IZUM, COBISS, COMARC, COBIB, COLIB, CONOR, SICRIS, E-CRIS, COBISS3, mCOBISS, COBISS+, dCOBISS, COBISS4, SGC, COBISS Lib, COBISS Cat, COBISS Ela are registered trademarks owned by IZUM.

CONTENTS

- 1 Introduction 1
- 2 Using the Metapace L-42DT printer 1
 - 2.1 List of equipment 1
 - 2.2 Printer description 1
 - 2.3 Getting the printer ready 3
 - 2.4 Connecting and installing the printer 6
 - 2.5 Printer operation..... 6
 - 2.5.1 Manual settings 6
 - 2.5.2 Printer and LED indicator status 7
 - 2.5.3 Label Utility tool..... 7
 - 2.5.4 Media calibration 7
 - 2.5.5 Network configuration with the use of the enclosed tool 9
 - 2.5.6 Uploading images (library logo) to the printer 13
- 3 Driver installation 14
- 4 Setup in the COBISS Lib application..... 19

FIGURES

Figure 1: METAPACE L-42DT printer – outside	1
Figure 2: Printer – inside.....	2
Figure 3: Printer back view – cable connections	3
Figure 4: Unified Label Utility-II tool	8
Figure 5: Net configuration tool.....	9
Figure 6: Selecting printer for network configuration	9
Figure 7: Network parameters (<i>data is fictional</i>).....	10
Figure 8: Adding a network printer.....	10
Figure 9: Entering network parameters.....	11
Figure 10: Additional port settings	11
Figure 11: Selecting the driver.....	12
Figure 12: Selecting the driver version	12
Figure 13: Printing a test page	13
Figure 14: Unified Label Utility-II tool (<i>image is symbolic</i>).....	13
Figure 15: PCX File Downloader (Unified Label Utility-II).....	14
Figure 16: Control panel, devices and printers	15
Figure 17: Printing Defaults.....	15
Figure 18: Setting the label format (New, USER (60,0mm x 40,0mm)).....	16
Figure 19: Printing position settings (Horizontal Offset, Vertical Offset)	16
Figure 20: Print settings (Graphics, Dithering).....	17
Figure 21: Media settings (Print Method, Thermal Transfer).....	17
Figure 22: Print Options Settings (Darkness, Speed Settings).....	18
Figure 23: Seagull Driver.....	18
Figure 24: Control panel and printing preferences	19
Figure 25: COBISS Lib user interface	19
Figure 26: COBISS Lib user interface and logical destinations	20
Figure 27: Logical destinations editor	20
Figure 28: Setting up logical destinations.....	21
Figure 29: Detailed settings	21
Figure 30: Refresh settings in the COBISS Lib user interface	22
Figure 31: Logical destinations editor for member labels	22

1 Introduction

The document demonstrates how the printer is used when working in the COBISS system (installing and connecting the printer, printer maintenance – replacing paper and ribbon, etc.).

2 Using the Metapace L-42DT printer

2.1 List of equipment

Basic equipment:

- printer (blue-grey, white)
- CD containing software, drivers and user manual
- USB cable (or another cable)
- AC adapter
- Power cord (220 V)
- Ribbon core

Optional additional equipment:

- external label holder
- knife
- label peel-off module

2.2 Printer description

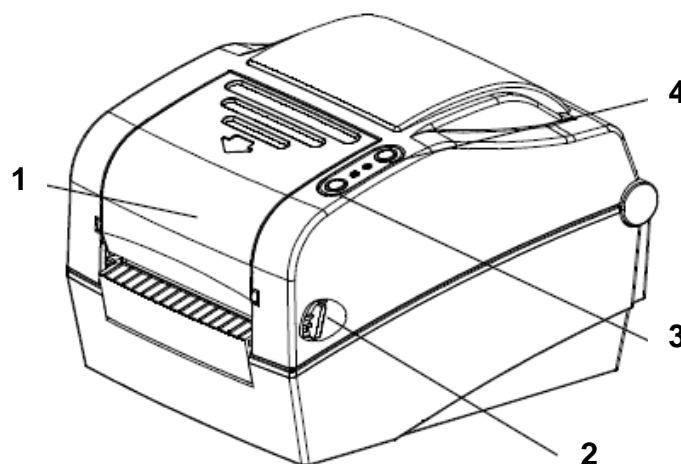


Figure 1: METAPACE L-42DT printer – outside

1. Clear plastic ribbon cover
2. Cover lever
3. FEED/CANCEL button for moving the label ribbon or aborting the operation
4. PAUSE button to pause printing

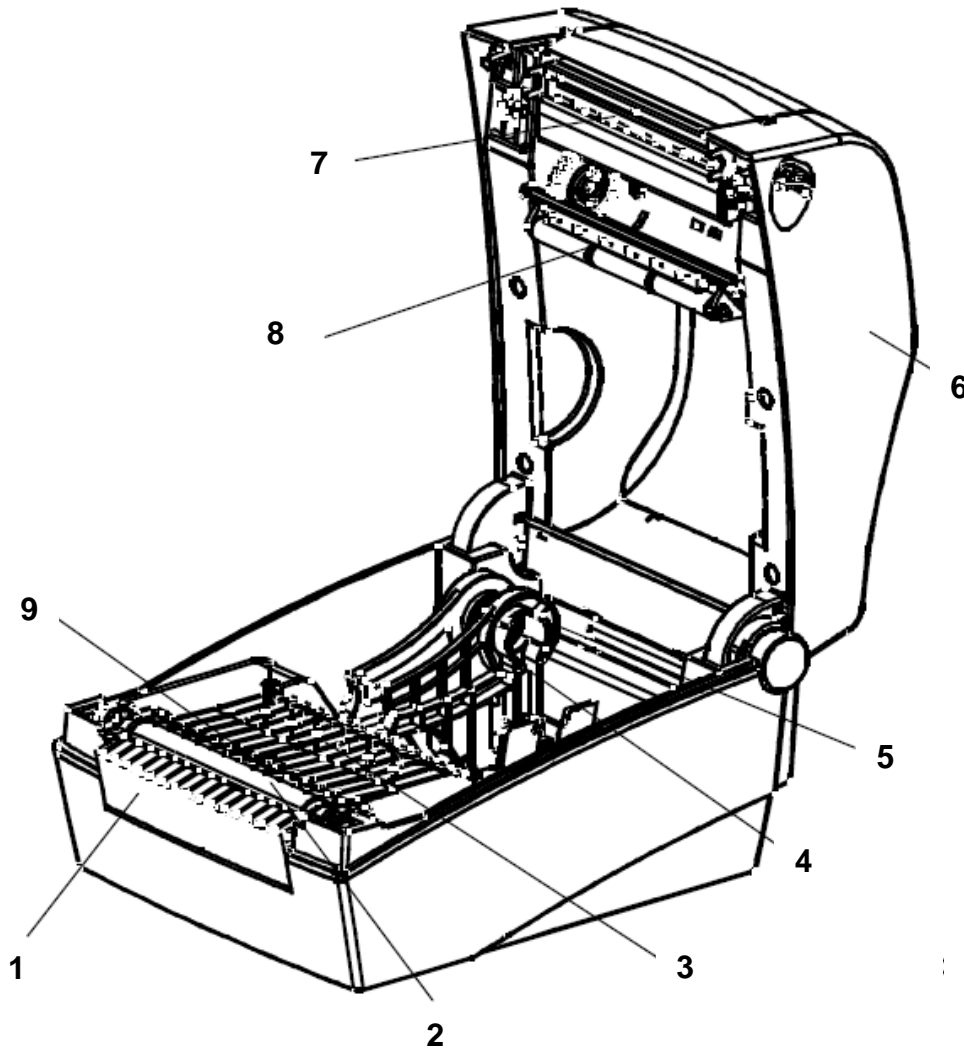


Figure 2: Printer – inside

1. Cover for accessories
2. Rubber roller
3. Lower gap sensor (receiver)
4. Paper holder
5. Paper fix tool
6. Paper cover
7. Printer head
8. Upper gap sensor (transmitter)

9. Black mark and notch sensor

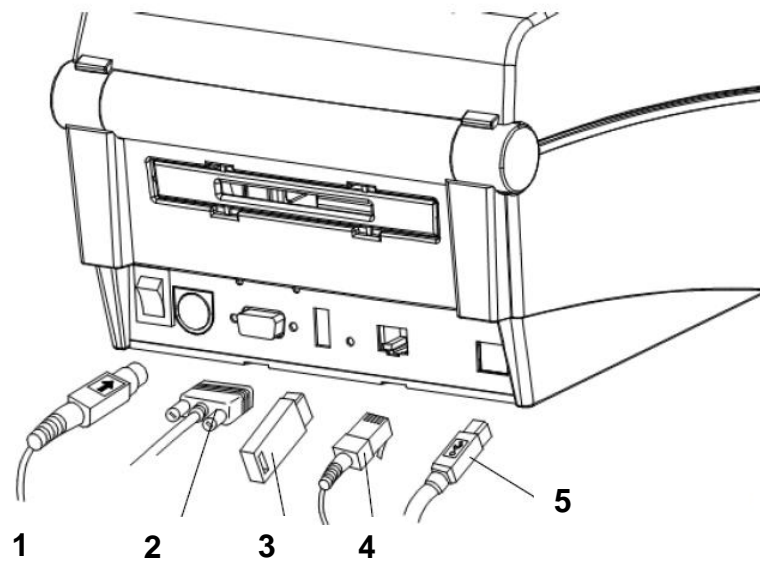


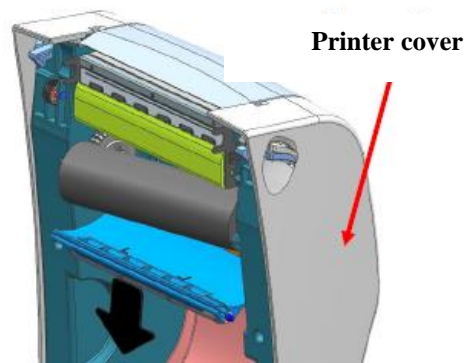
Figure 3: Printer back view – cable connections

1. Power connector
2. RS232C serial cable (to connect to computer)
3. USB-A interface (only to connect to wireless network interface)
4. Network interface (to connect to local network)
5. USB-B interface (to connect to computer)

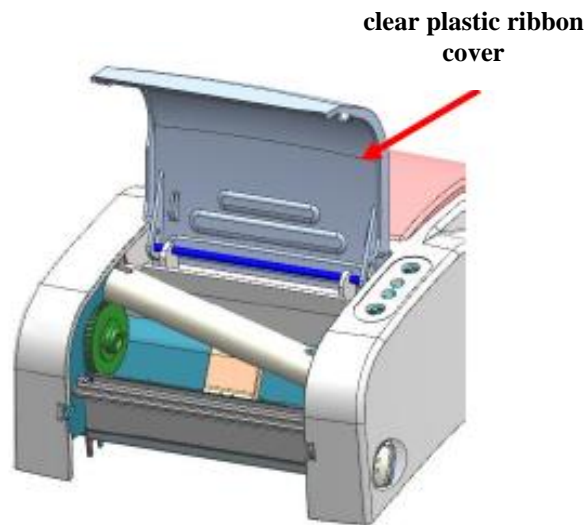
2.3 Getting the printer ready

Ribbon installation

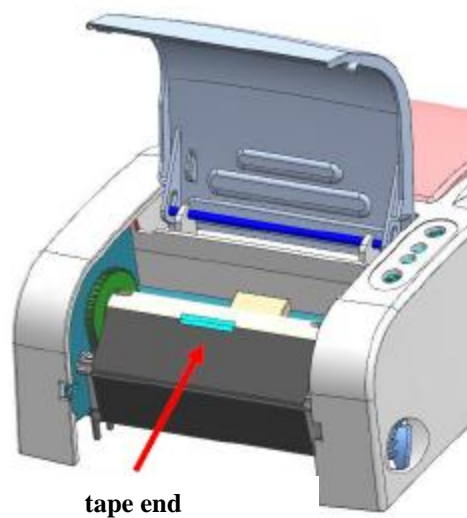
1. Open the paper cover and insert the ribbon by placing it to the spring fastening first (right).



2. Open the clear plastic ribbon cover by pulling in the direction indicated by the arrow on the cover and insert the core.



3. Insert the ribbon and attach it to the core.

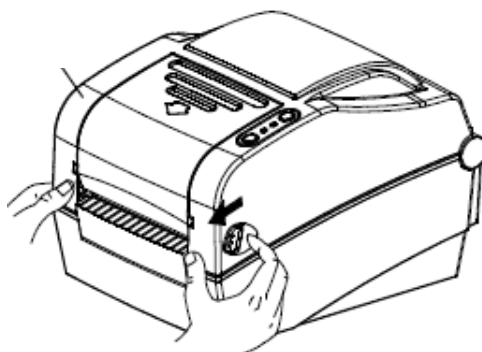


4. Use the cog to apply the blank part of the tape to the coiling portion of the ribbon.
5. Close both the ribbon cover and the paper cover.

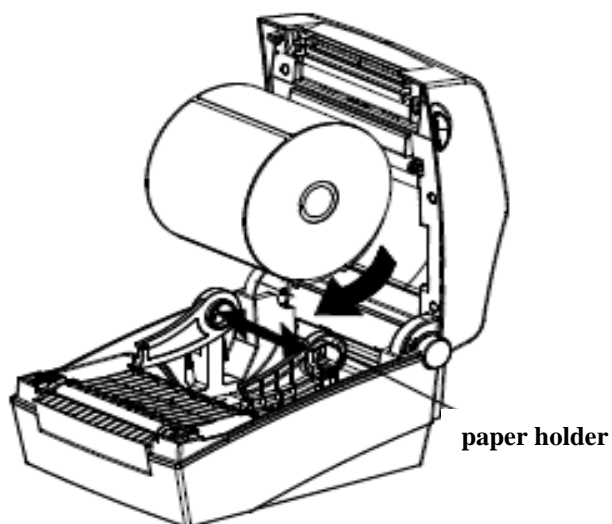
Label installation

1. Use the buttons on both sides of the printer to open the paper cover.

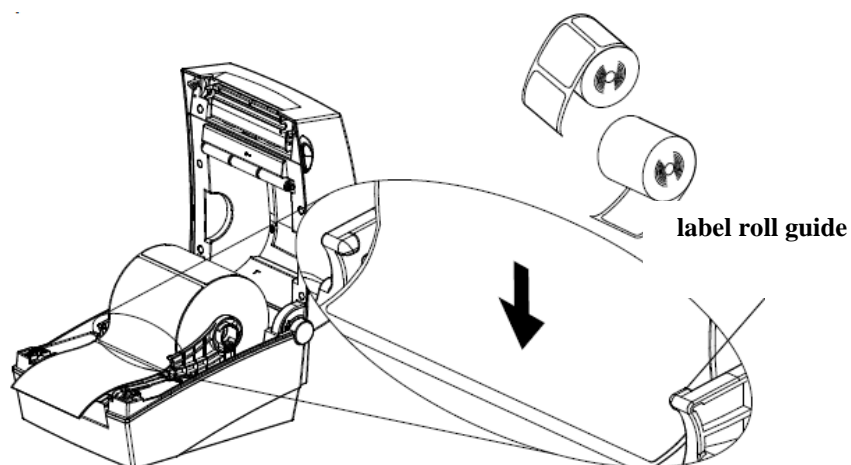
paper cover



2. Spread the paper holder and insert label roll.



3. When inserting the label roll, also push the end of the label roll under the label roll guides.



4. Close the paper cover.

2.4 Connecting and installing the printer

There are four ways to connect the METAPACE L-42DT printer and get it ready to work. To connect it to the computer, use the USB-B cable (enclosed) or the serial cable. To connect it to the network, use the network cable (RJ45). To use the printer with several workstations, it is recommended to connect it to the local network.

When installing the printer, use the drivers available:

- on the enclosed CD or
- at the following link: http://vbbghome.bg.cobiss.net/preporuki_za_oborudvane/

The printer has two buttons: FEED/CANCEL and PAUSE, as well as two tricolour LED indicators. The LED indicators indicate different operation modes and also signal errors. Use the FEED/CANCEL button to move labels forward and start testing, calibration and configuration (factory default settings). Use the PAUSE button to pause printing.

If you need help when using the printer, call the call centre (02/2520 333) or send an e-mail to podpora@izum.si.

2.5 Printer operation

2.5.1 Manual settings

To change settings, use the FEED/CANCEL and PAUSE buttons and observe the LED indicators:

Printer state before operation	Button		Operation procedure	Printer operation mode
	FEED/CANCEL	PAUSE		
Power OFF	Press	-	Turn printer on. Hold the button until printer starts self-test printing.	Self-test Printing Mode
Stand by	Press	-	Press the button and release immediately.	Feed Mode
Stand by	-	Press	Press the button for two seconds.	Entry to Configuration Mode
During printing	Press	-	Press the button for two seconds and continue to hold.	Print Cancel Mode
During printing	-	Press	Press the button and release immediately.	Print Pause Mode

¹ <http://www.seagullscientific.com/drivers/printer-driver-features/?m=metapace+l-42dt>

2.5.2 Printer and LED indicator status

LED 1		LED 2		Printer Status	
Colour	Status	Colour	Status		
Green	On	Green	On	Standby mode	Standby mode
Red	On	Red	On	Error mode	Ribbon is not detected
Red	On	Orange	On	Error mode	Labels – gap not detected
Red	On	Green	Blink	Error mode	Printer head overheating
Red	On	Red	Blink	Error mode	Paper cover open
Red	On	Orange	Blink	Error mode	No labels
Red	On	-	Off	Error mode	Media calibration failure
Red	Blink	Red	Blink	Error mode	Auto-Cutter error
Orange	On	Orange	On	Warning	Switch settings
Green	Blink	Red	On	Wait for input	Print is paused temporarily.
Green	Blink	Green	Blink	Wait for input	Cover Close Mode
Green	On	Red	Blink	Wait for input	Print Cancel Mode

2.5.3 Label Utility tool

The Label Utility tool can be found on the enclosed CD. Use it for the following functions:

1. serial communication settings (HandShake, Stop bit, Data bit, print rate),
2. basic printer settings (paper size, printing speed and density, paper type, use of ribbon),
3. language settings (code tables),
4. media sensor calibration (manual settings for materials), and
5. other.

More tips can be found on the enclosed CD in the United Label Printer Utility Manual ("Metapace_Label_Unified_Utility") in the "Utilities" folder.

2.5.4 Media calibration

The printer has been designed to recognise gaps between labels automatically. In order to do so, it will use up three labels when it prints for the first time. If it still does not recognise the gaps, the calibration function must be activated manually. During this procedure, the printer will:

1. adjust the label detection sensor and measure the actual length of the label;
2. adjust the gap detection sensor and measure the actual gap length between labels.

Media calibration is required when the printer is installed for the first time, when changing the label format and when the printer does not print in the designated printing space (print positioning is off).

How to run media calibration:

1. Enter manual calibration mode: when the printer is on, hold the PAUSE button for two seconds. Both LED indicators change colour from green to orange.
2. The colours of the LED indicators start to change and the required operation (i.e. calibration) is started when pressing the FEED button (LED 1 is orange, LED blinks green four times).

To learn more about calibration, consult the original user manual, chapter "5. Detailed features", page 20.

2.5.4.1 Media calibration with the use of the enclosed tool

Procedure:

1. Connect the printer via the desired interface (serial, USB or Ethernet).
2. Run "Unified Label Utility-II.exe" from the enclosed CD or download it from the website².
3. Select the installation interface and click the "Connect" button.

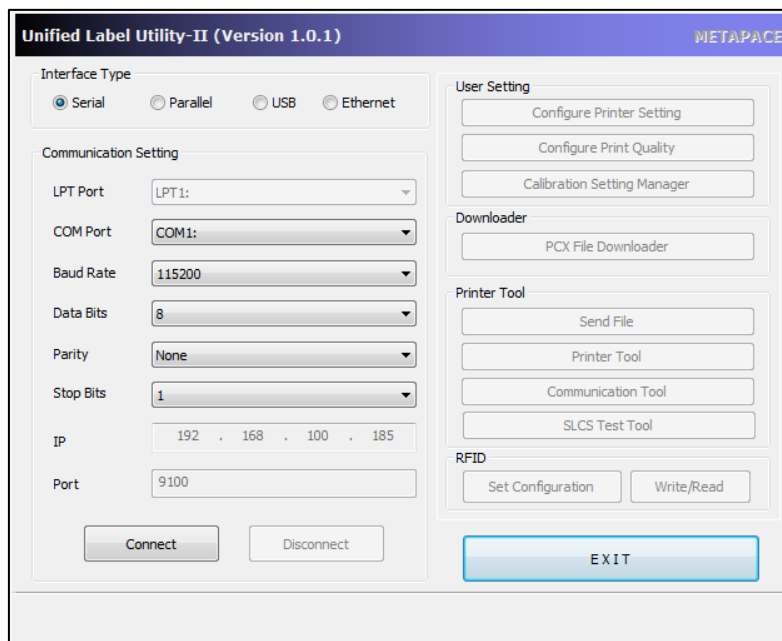


Figure 4: Unified Label Utility-II tool

² http://www.jarltech.de/2007/support.php?gotoartikel=metapace_l-42dt&sort=kategorie&language=en&kat_id=2200&link=2&supportdata=metapace_l-42dt-en

4. Select the printer and click "Setting". The window containing the net configuration will appear. You will receive the data for the printer from the local network administrator.

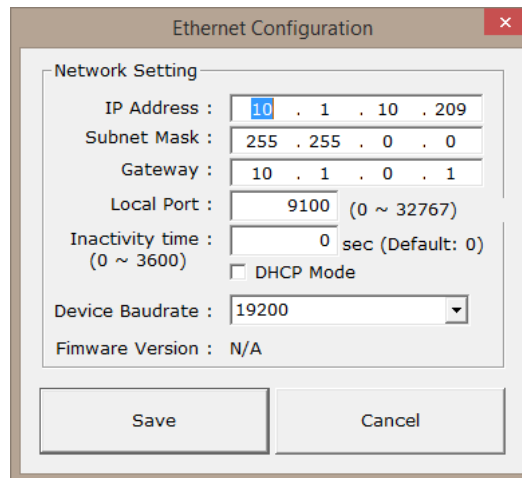


Figure 7: Network parameters (*data is fictional*)

5. Install the printer drivers³ and restart the computer.
6. In the **Control panel** under **Devices and printers** select **Add a printer by using an IP address**.

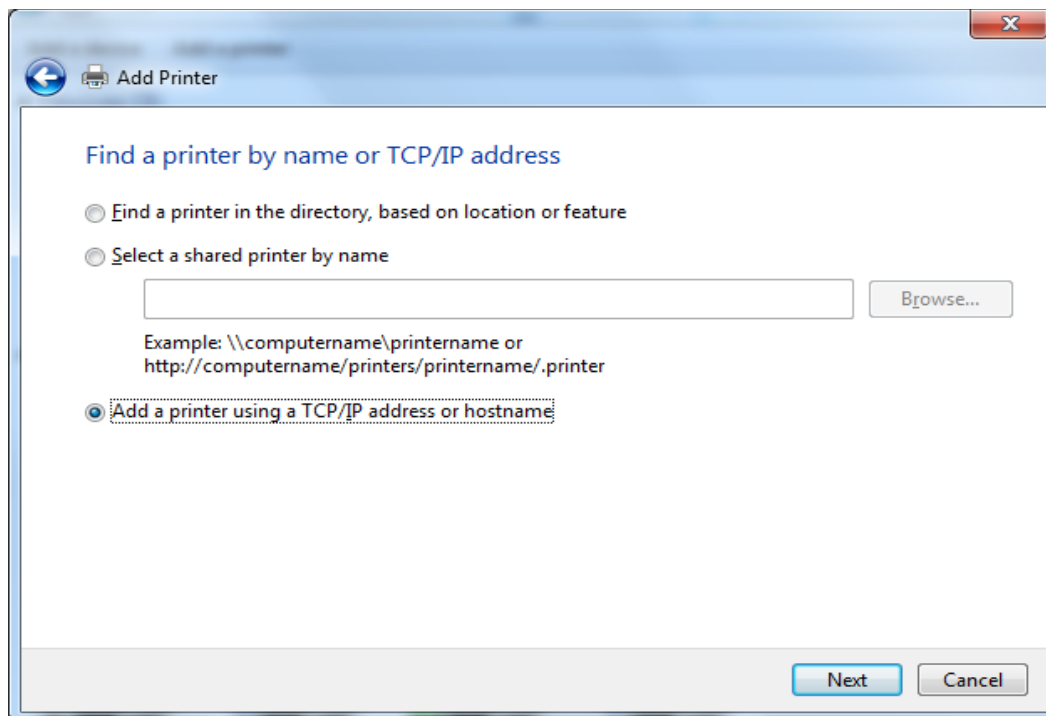


Figure 8: Adding a network printer

7. Enter the IP address into the "Hostname or IP address" field.

³ <http://www.seagullscientific.com/drivers/printer-driver-features/?m=metapace+l-42dt>

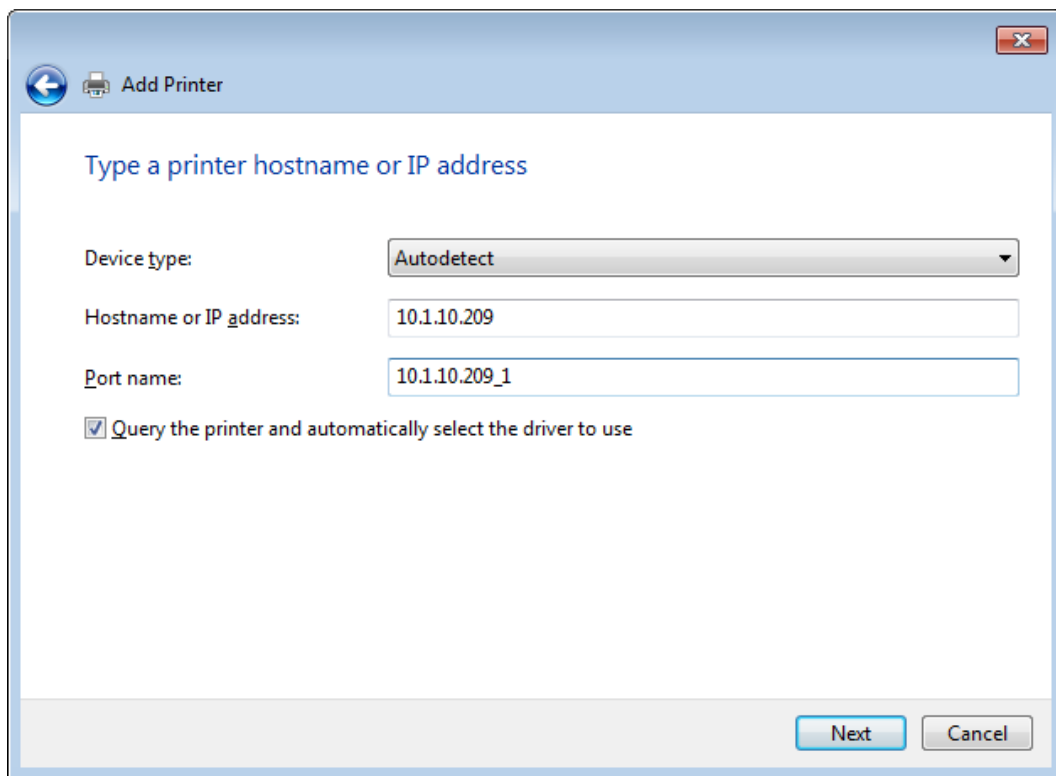


Figure 9: Entering network parameters

8. Confirm additional port information.

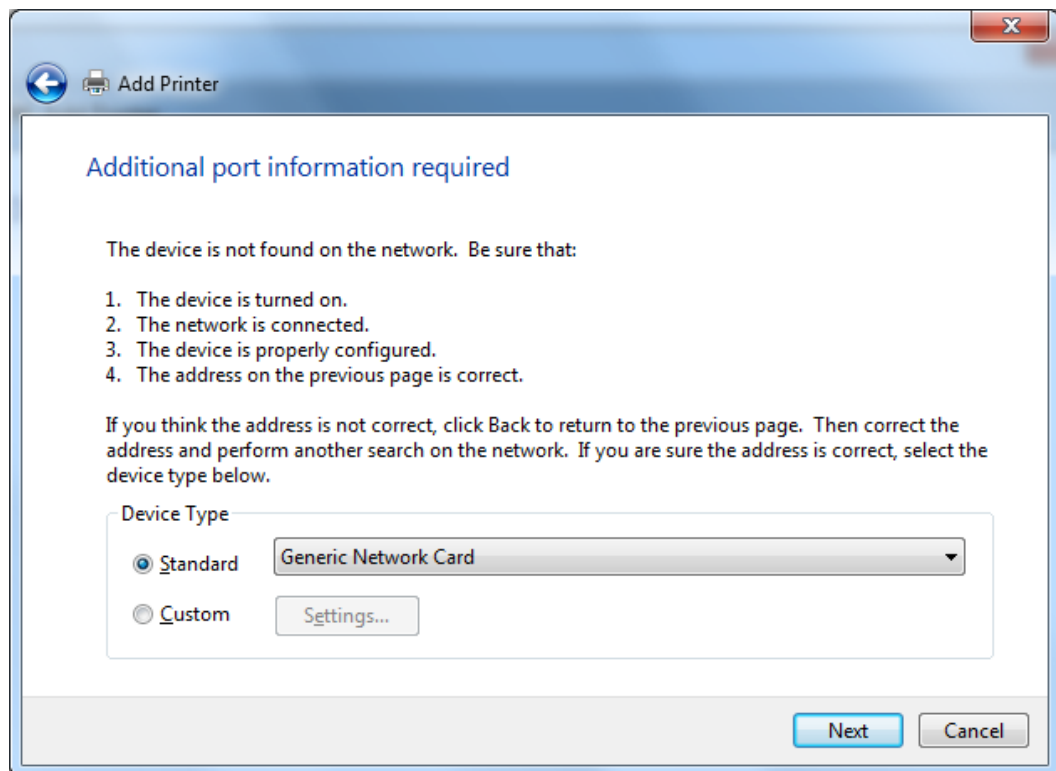


Figure 10: Additional port settings

9. Select the manufacturer METAPACE and the printer model L-42DT.

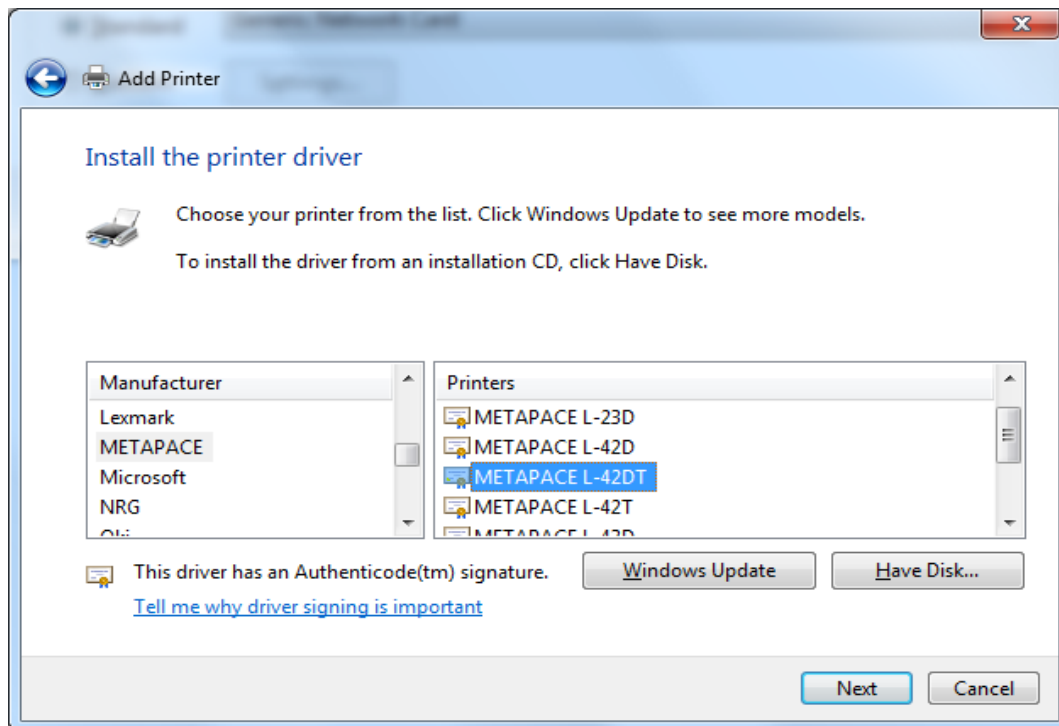


Figure 11: Selecting the driver

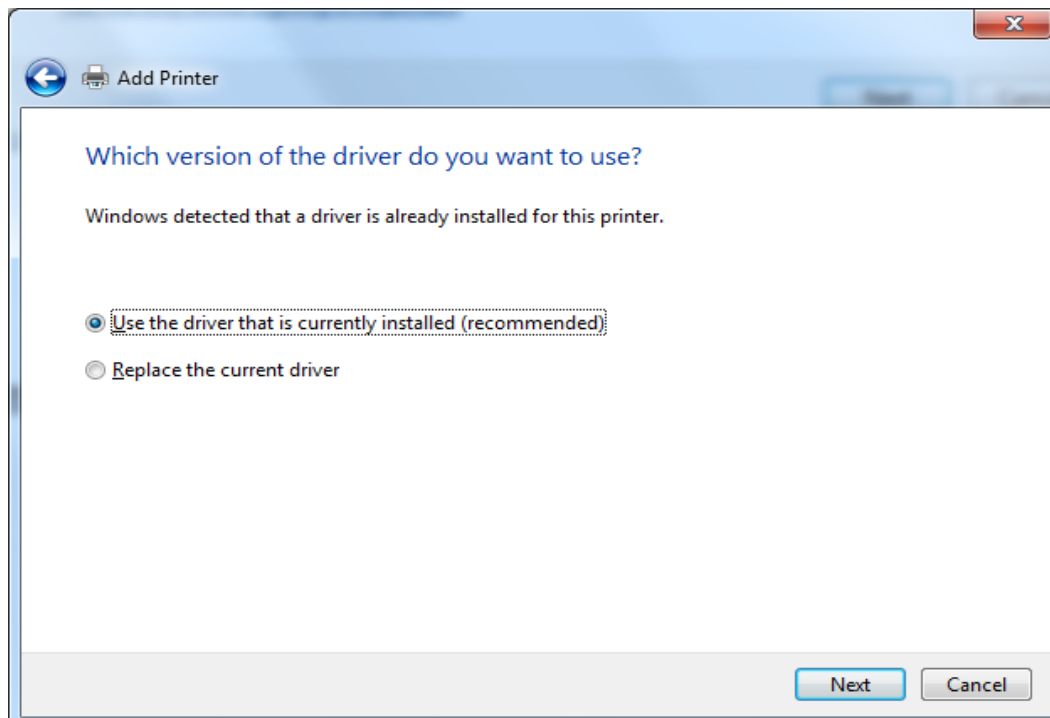


Figure 12: Selecting the driver version

10. Check if the driver was installed successfully by printing a test page.

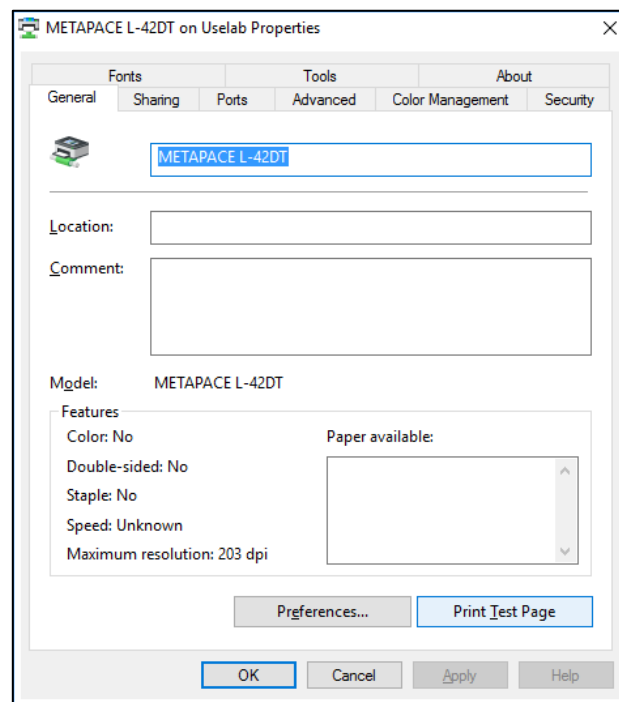


Figure 13: Printing a test page

2.5.6 Uploading images (library logo) to the printer

Procedure of uploading images to the printer:

1. Run "Unified Label Utility-II.exe" from the enclosed CD or download it from the website⁴.
2. Select the installation interface and click the "Connect" button.

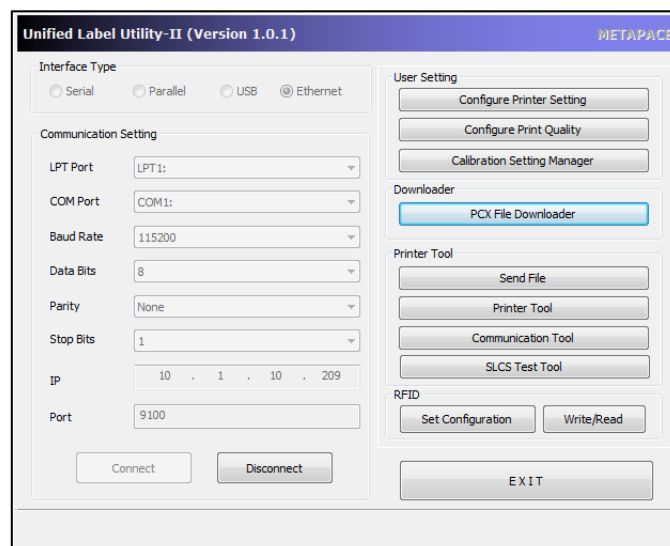


Figure 14: Unified Label Utility-II tool (*image is symbolic*)

⁴ http://www.jarltech.de/2007/support.php?gotoartikel=metapace_1-42dt&sort=kategorie&language=en&kat_id=2200&link=2&supportdata=metapace_1-42dt-en

3. Click the "PCX File Downloader" button and a new window will open:

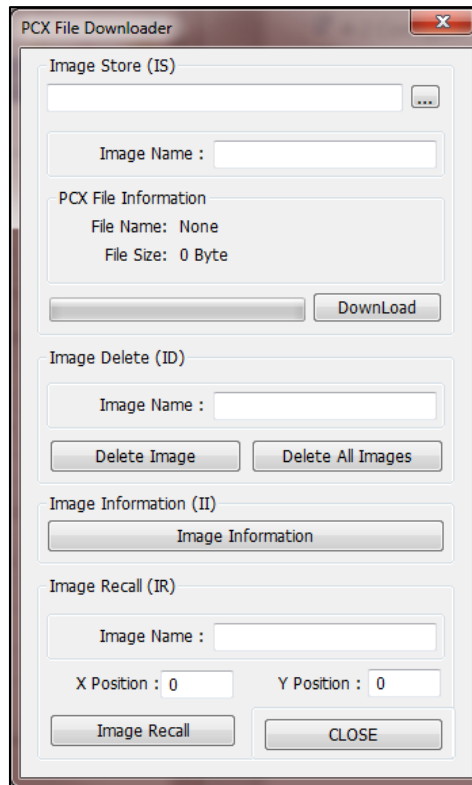


Figure 15: PCX File Downloader (Unified Label Utility-II)

4. Find and select the desired image file (*.pcx) and click "Download".

Deleting images: Instead of the "Download" button, use the "Delete Image" button.

3 Driver installation

Once the printer driver is installed, you have to update the settings on the METAPACE L-42DT before you can start printing labels. To do so, go to **Control panel** and select **Devices and Printers**. All available printers will be displayed. Select the METAPACE L-42DT printer and right-click on it. From the additional options, select the **Printer properties** option. (Figure 16).

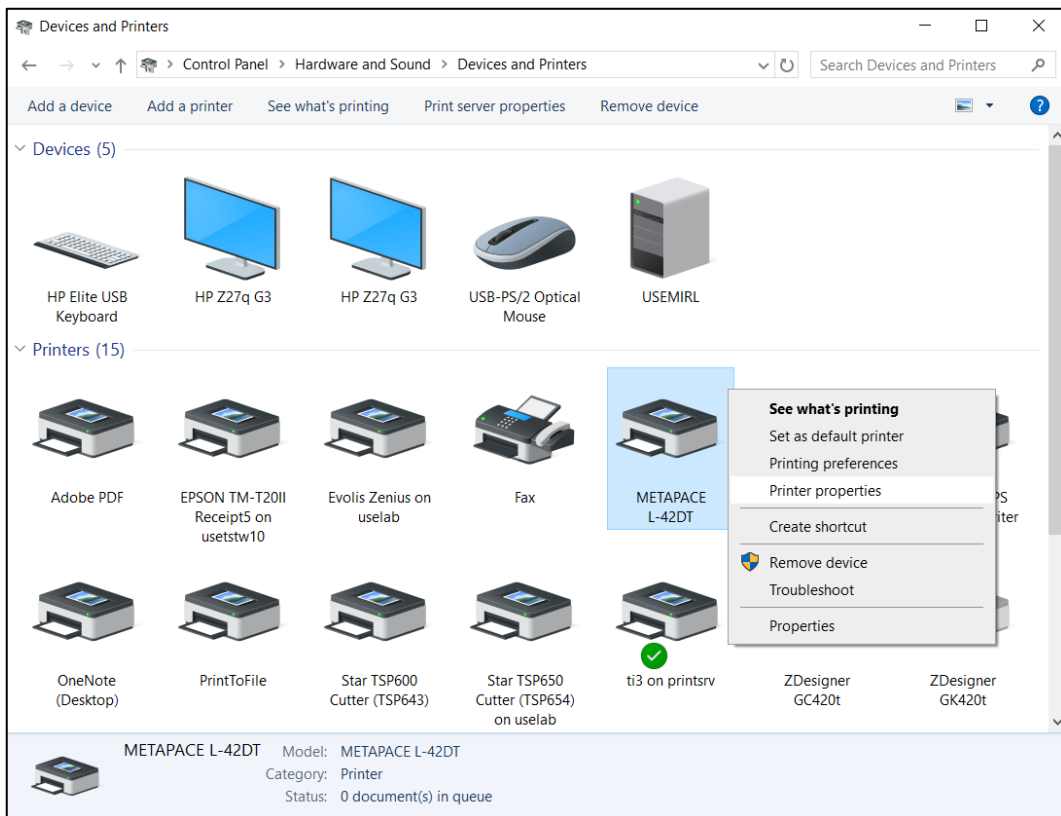


Figure 16: Control panel, devices and printers

Once you click **Printer properties**, a new window will open. In the **Advanced** tab, select the option **Printing Defaults ...** (Figure 17).

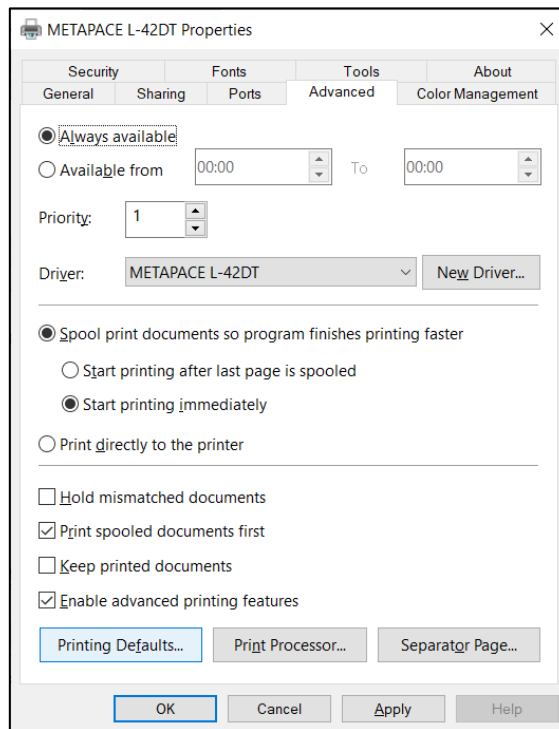


Figure 17: Printing Defaults

On the first tab (**Page Setup**), set up the label format by clicking **New** and entering the desired label format (e.g. *USER (60.0 mm x 40.0 mm)*) that you can then set up as the default format (Figure 18).

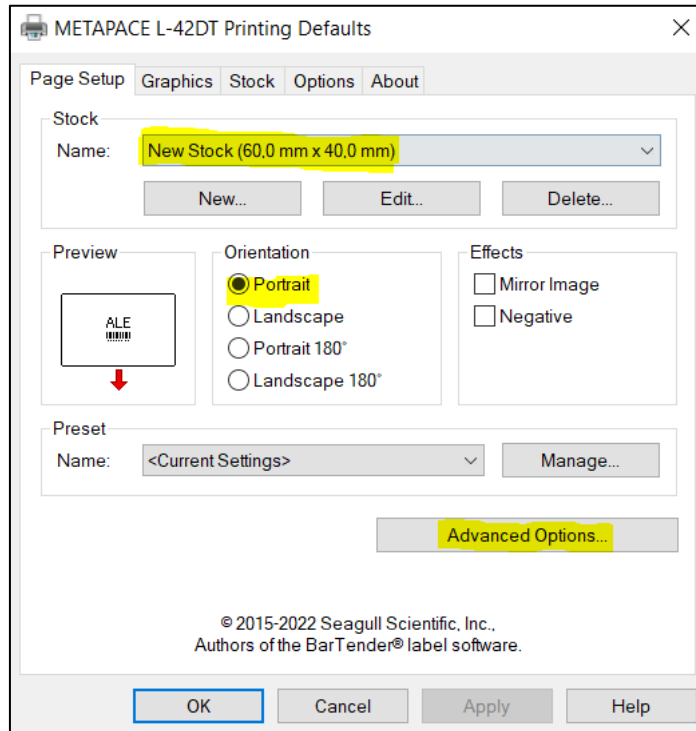


Figure 18: Setting the label format (New, USER (60,0mm x 40,0mm))

If you click **Advanced Options...**, you can set up the start printing position and re-adjust the printout position on the label. Ideally, the starting position is 0.0 mm, 0.0 mm (Figure 19).

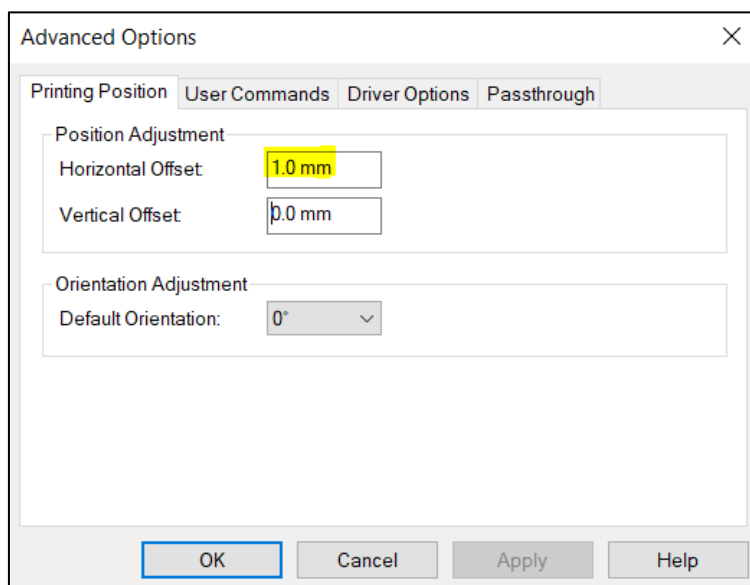


Figure 19: Printing position settings (Horizontal Offset, Vertical Offset)

Use the second tab (**Graphics**) to set Dithering to **None** (Figure 20).

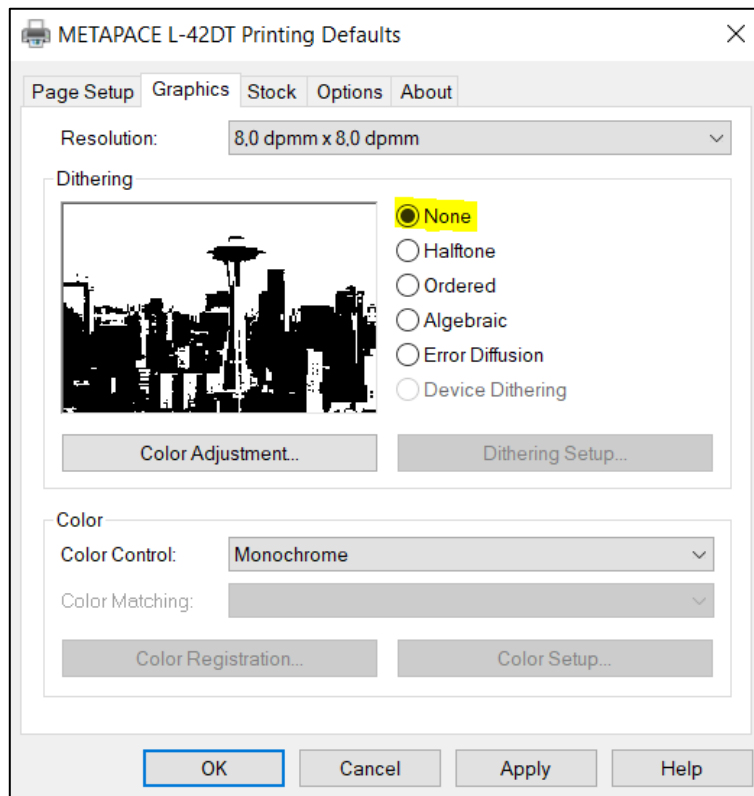


Figure 20: Print settings (Graphics, Dithering)

Use the third tab (**Stock**) to set the Print Method to Thermal Transfer (Figure 21).

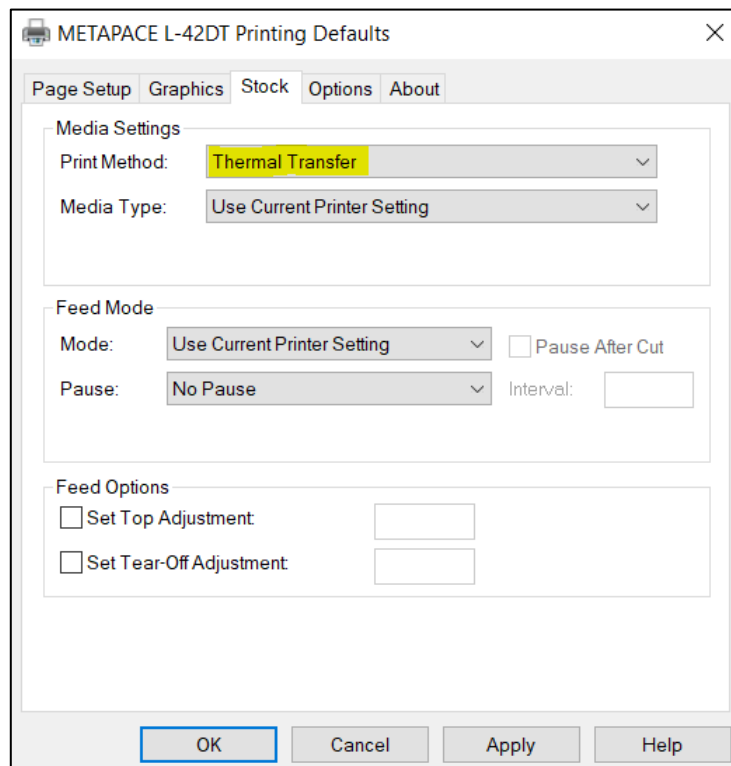


Figure 21: Media settings (Print Method, Thermal Transfer)

Use the fourth tab (**Options**) to activate the option of pronounced printing (**Darkness**) nad printing speed (**Speed Settings**). Set darkness to 25 and the speed settings to 76.20mm/sec (Figure 22).

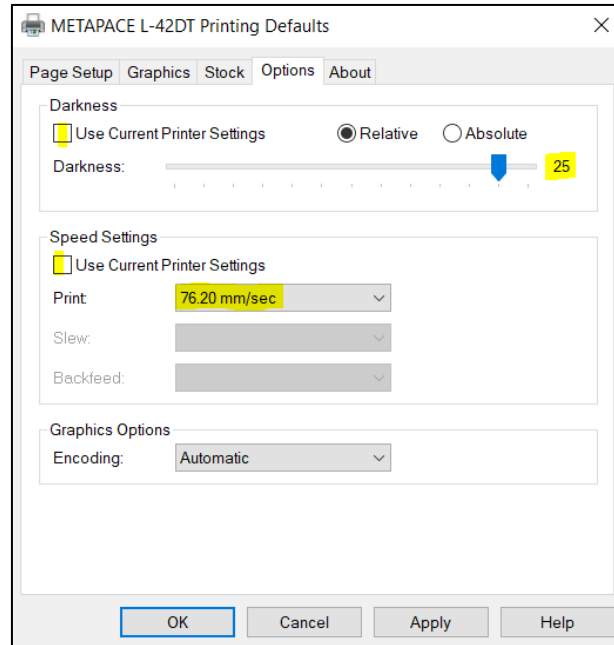


Figure 22: Print Options Settings (Darkness, Speed Settings)

The Seagull driver was used: <http://www.seagullscientific.com/drivers/printer-driver-features?m=metapace+l-42dt> (Figure 23).

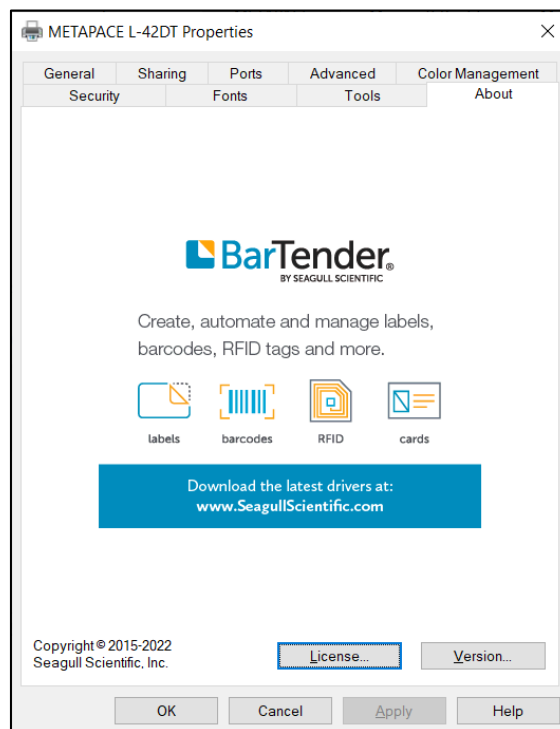


Figure 23: Seagull Driver

It is recommended to use the same settings for the **Printing preferences** option (Figure 24).

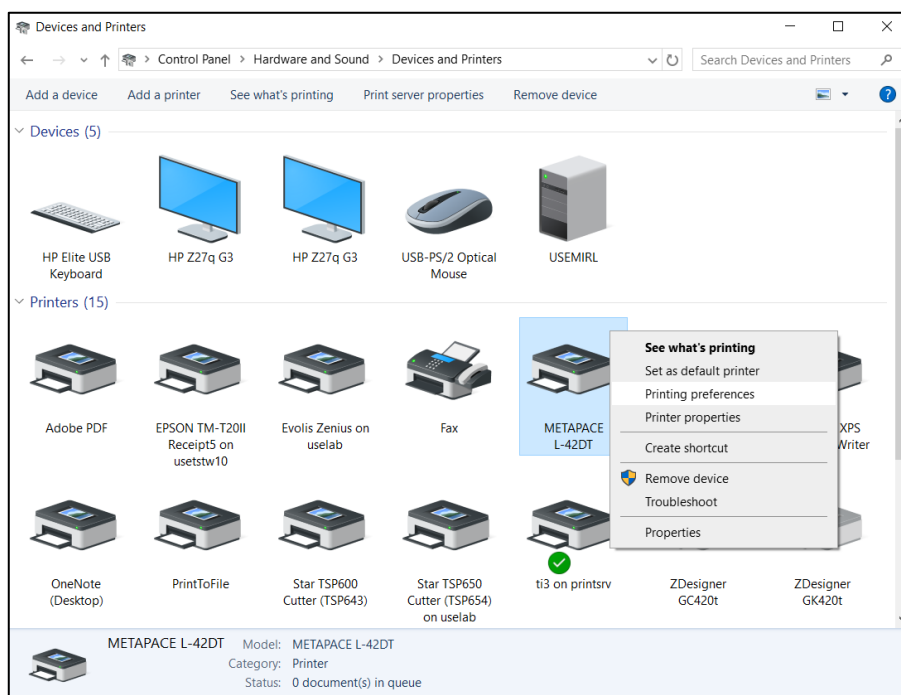


Figure 24: Control panel and printing preferences

4 Setup in the COBISS Lib application

To use the printers in COBISS Lib, the COBISS DGW service must be installed beforehand. https://www.cobiss.net/doc/Namescanje_COBISS_DGW_EN.pdf

To check if the installation was successful, you can use the **Settings and administration / Server / Test connection with COBISS DGW** method in COBISS Lib. The message *COBISS DGW is connected!* means that the installation was successful and that you can continue adding printers to the logical destinations (Figure 25).

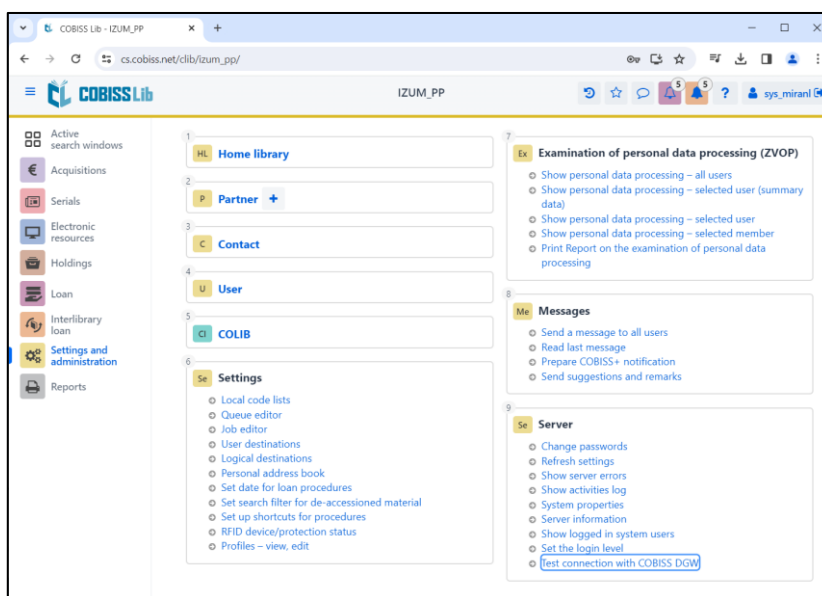


Figure 25: COBISS Lib user interface

In COBISS Lib select **Settings and administration / Settings / Logical destinations** (Figure 26).

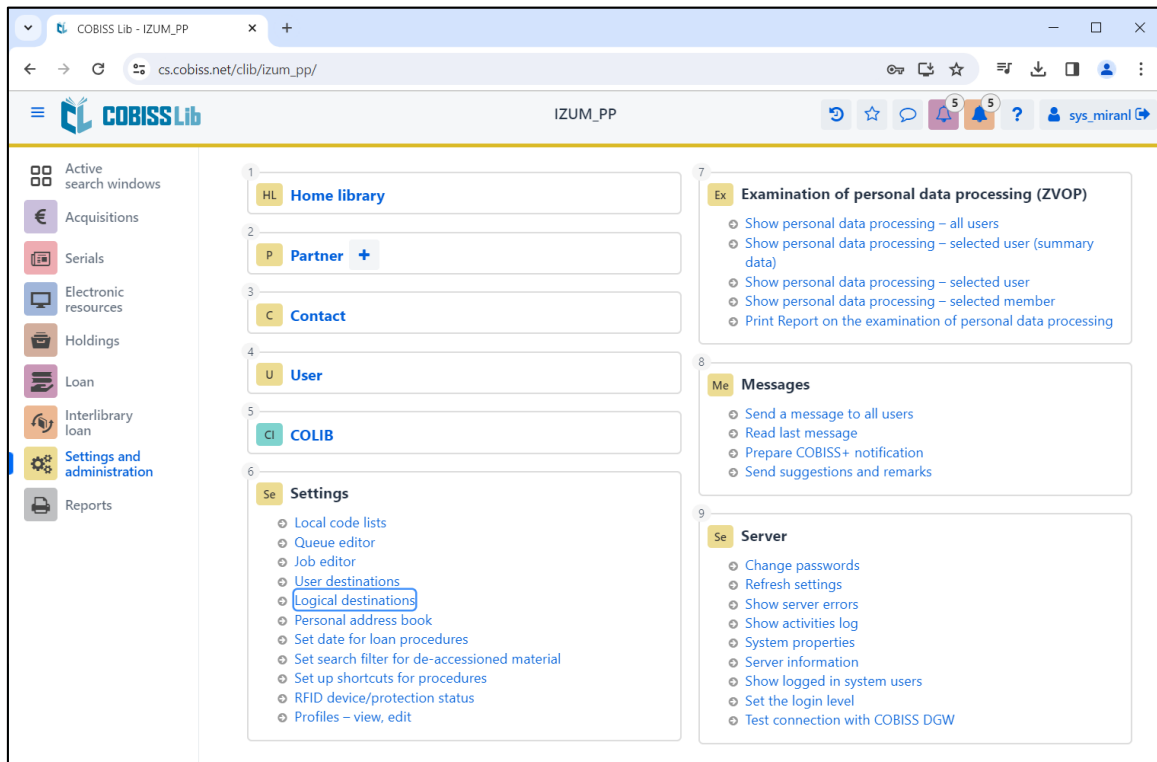


Figure 26: COBISS Lib user interface and logical destinations

The **Logical destinations editor** window will open, where you select the option *Label – material: [default local printer]* and click the **Edit** button (Figure 27).

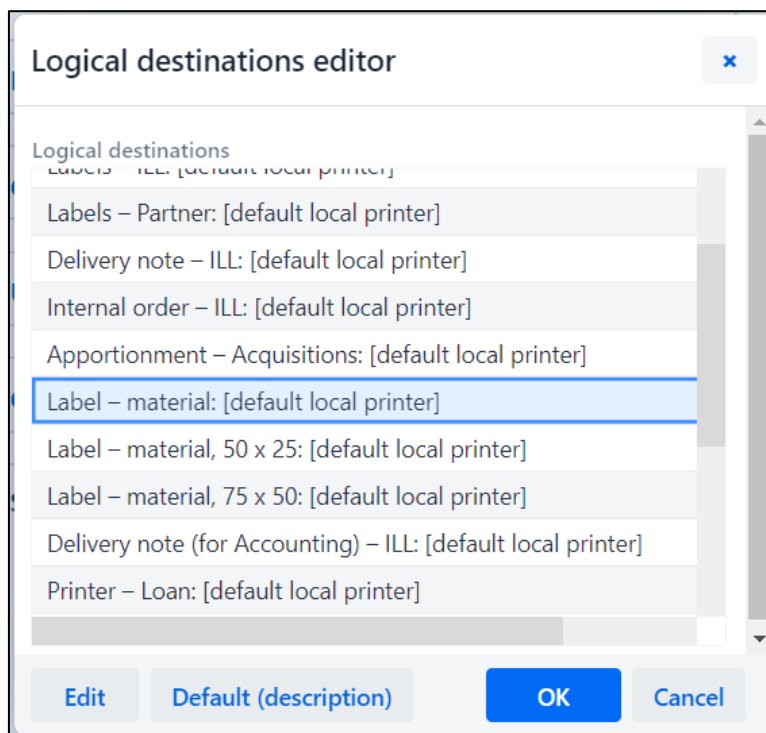


Figure 27: Logical destinations editor

The **User destinations** window will open, where you click the **Add printer** button. In the new window, select the *METAPACE L-42DT* printer, with which you will print labels for material, from the drop-down list (Figure 28).

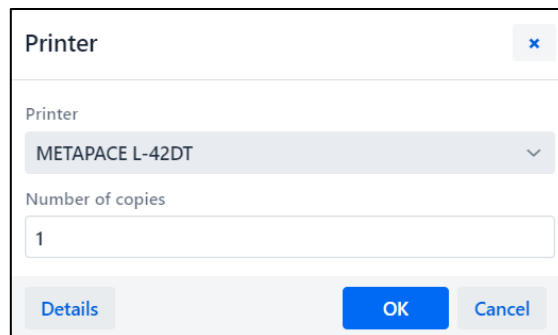
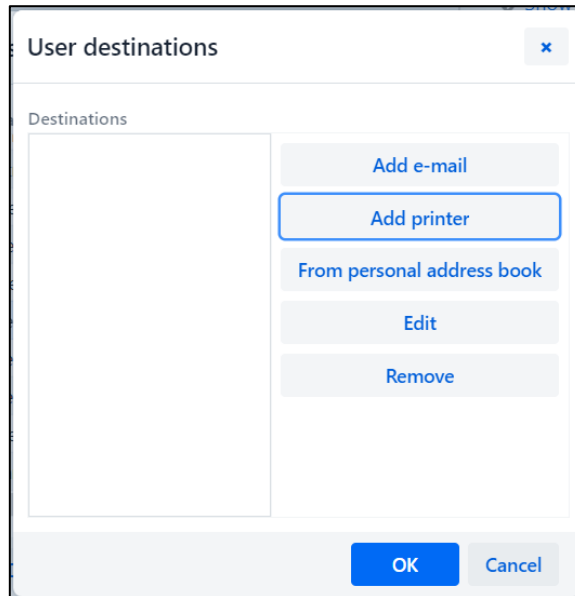


Figure 28: Setting up logical destinations

Once you select the printer, click the **Details** button to check if the detailed settings for this type of printer are correct (Figure 29).

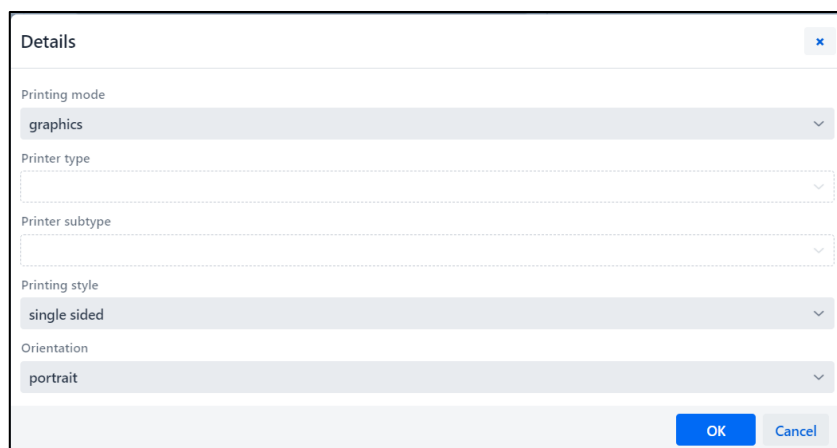


Figure 29: Detailed settings

When you define all the settings, confirm each selection by clicking the **OK** button. Finally, select **Refresh settings** in the **System** menu (Figure 30). If this option is not available, refresh all new settings by logging out and then re-logging into the COBISS Lib software.

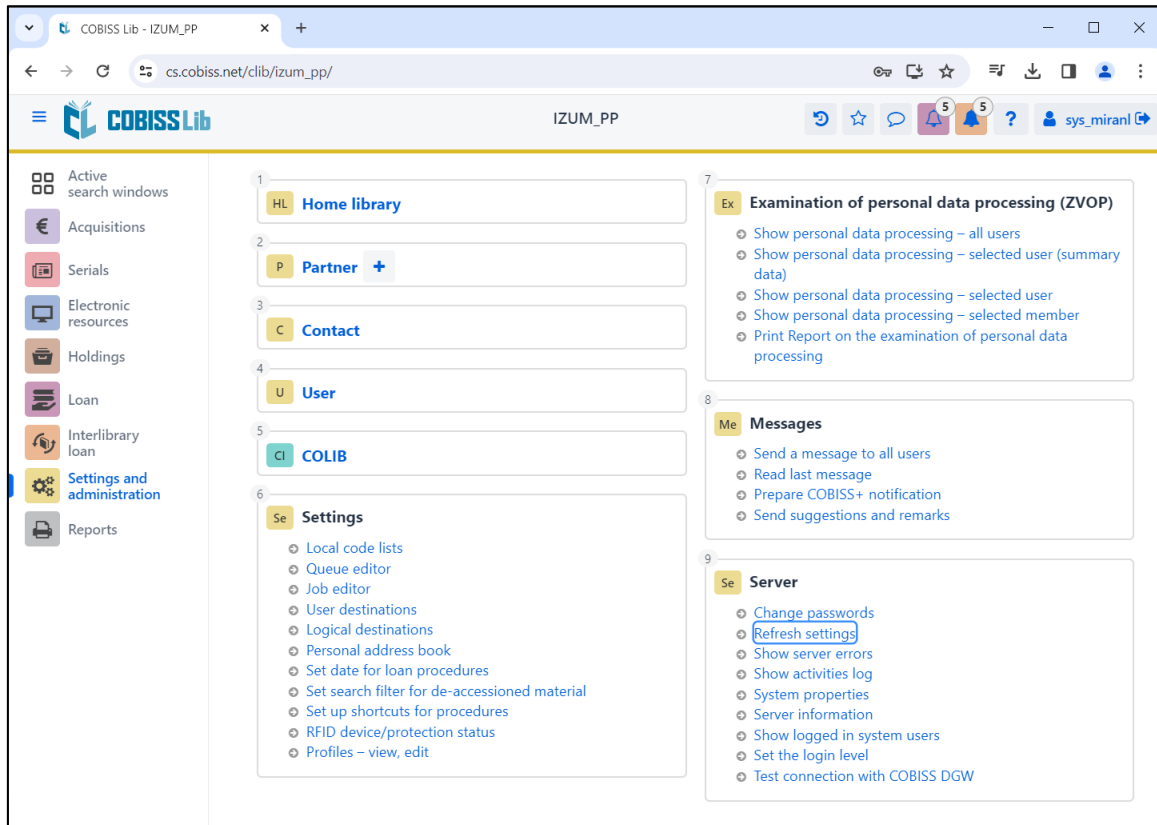


Figure 30: Refresh settings in the COBISS Lib user interface

Now you can start printing labels for the material.

If you wish to use the same printer to print labels for members, the process remains identical to the one described in the previous steps. The only difference is setting the logical destination to *Label – Loan (member)* (Figure 31).

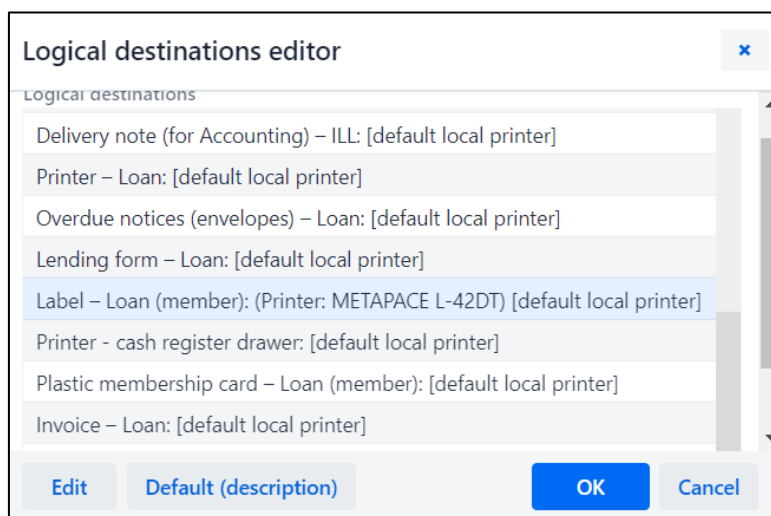


Figure 31: Logical destinations editor for member labels